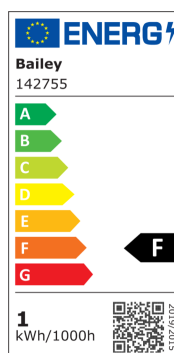
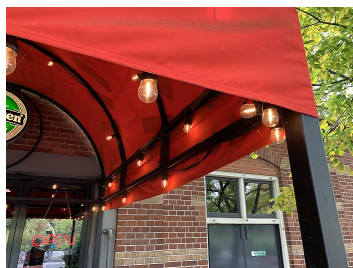


LED FIL Safe ST45 E27 1W (10W) 90lm 827 PC Clear

Article number 142755

BAI LED Filament Safe ST45 E27 1W 2700K Clear 90lm (10W) 230V-240V 320°
45x89mm IP44 Shatterproof Polycarbonate Party LED-lamp

The LED filament Safe series responds to the desire to also use the decorative filament bulbs where shards are extremely undesirable when broken. Think of professional (open) kitchens, above tables in a restaurant, above the food department in and on the market. The bulb is made of polycarbonate which is much stronger than the traditional glass shade and also does not splinter. This also makes the lamp ideal for use in Bailey Light Strings at (temporary) festivals or events. When mounted hanging in combination with a suitable lamp holder (holder makes a watertight seal with the bulb) also outdoors applicable. We advise to use this lamp in combination with the Bailey Light Strings of 5, 10, 25 or 50m. Moreover, this lamp is durable and energy efficient.



General ETIM properties

ETIM group	Lamps
ETIM class	LED-lamp/Multi-LED
Name	142755
Brand	Bailey
Productseries	LED Filament safe
Product type	ST45

ETIM specifications

IFTTT support available	No
Compatible with Amazon Alexa	No
Compatible with Google Assistant	No
Compatible with Apple HomeKit	No
Photobiological safety according to EN 62471	Other
With remote control	No
Remote operation possible	No
Average nominal lifespan [h]	10000
Weighted energy consumption in 1000 hours [kWh]	1
Min. number of switching cycles	7500
Energy efficiency class	F
Lamp designation	Other
Energy Efficiency Index (EEI)	70
Degree of protection (IP)	IP44
Length [mm]	89
Diameter [mm]	45
Dimmable	No
Colour consistency (McAdam ellipse)	SDCM6
Beam angle [°]	320 - 320
Colour housing	Colourless
Colour temperature [K]	2700 - 2700
Colour	White
Socket	E27
Colour of light according to EN 12464-1	Warm white <3300 K
Type of glass/cover	Clear
Filament lamp	Yes
Lamp shape	Tube, single-ended
Colour rendering index CRI	80-89
Lamp efficacy [lm/W]	90
Luminous flux [lm]	90 - 90
Voltage type	AC
Lamp power [W]	1 - 1
Power factor	0.4
Nominal current [mA]	19 - 19
Nominal voltage [V]	220 - 240

Alternative articles



141885

LED FIL Safe G45 E27
1W (9W) 80lm 827 PC
Clear



143861

SPIRALED Safe ST45
E27 2W (18W) 175lm
827 PC Clear



144946

EcoPack 5pcs LED FIL
Safe ST45 E27 2W
(21W) 200lm 827 PC
Clear